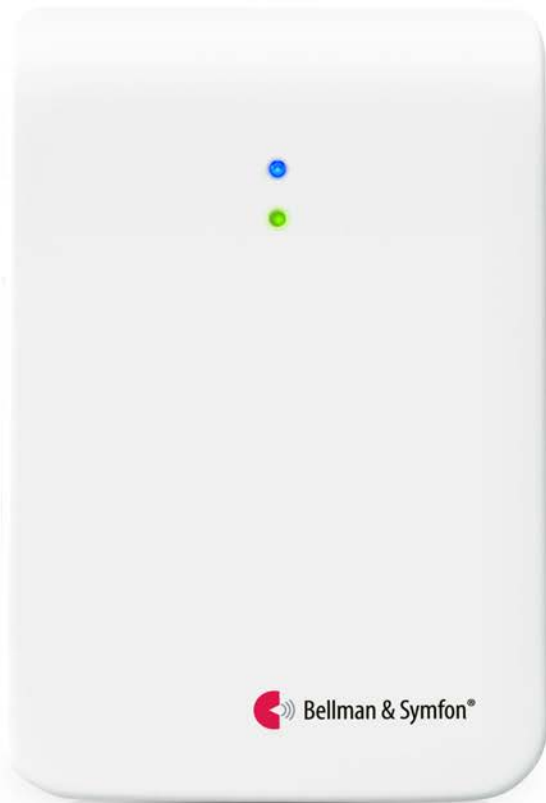


Bellman Bridge

BE1521-433



Connects Visit™ to your Bellman Watch, mobile phone and tablet.

The Bellman Bridge connects your Visit system to the Bellman Watch, mobile phone and tablet using the latest Bluetooth 5 technology.

It works in two directions, enabling you to receive Visit alerts on your watch and smart device, as well as forwarding mobile calls and messages to your other Visit receivers. The Bellman Bridge features an external trigger input, a RJ11 telephone input, and a relay output for connection to an external source like e.g. another transceiver.



Features

Bluetooth powered

Up to 200 m coverage, open field

App controlled

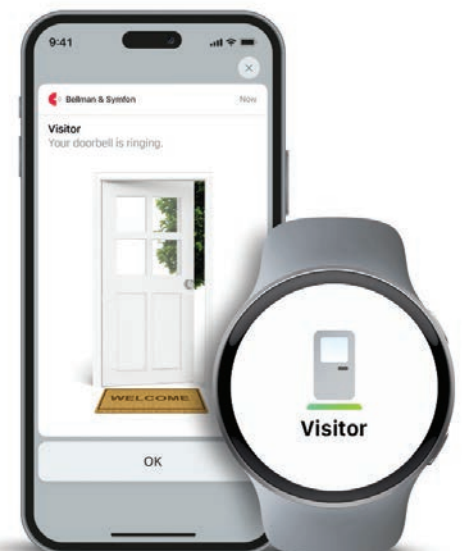
Available for iOS & Android

Sends Visit alerts to mobile devices

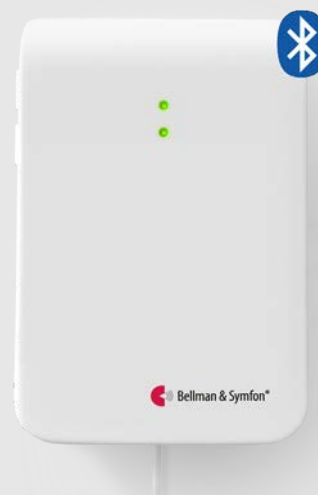
Displays Visit alerts on your Bellman Watch, smartphone or tablet

Alerts for mobile calls and messages

Signals your Visit receiver when you have incoming calls or messages



Technical specifications

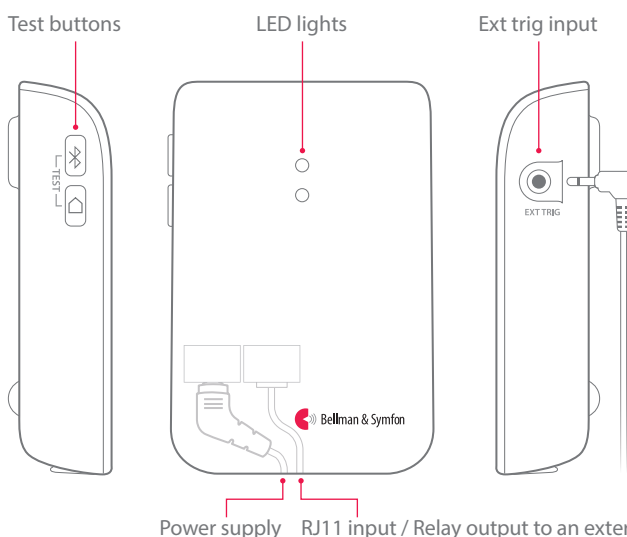


Dimensions and weight

Height: **100 mm**
Width: **65 mm**
Depth: **27 mm**
Weight: **117 g** (Bridge) incl. batteries
100 g (Power supply)



Buttons and connectors



Connections

- Bellman Watch or smartphone via Bluetooth
- Visit transmitters via 433 MHz
- Landline telephone via RJ11 input
- Bellman & Symfon accessory via ext trig input
- External system via RJ11 relay output

Environmental requirements

- For indoor use only
- Temperature: 0 – 35 °C, 32 – 95 °F
- Relative humidity: 15% – 90% (non condensing)

Power and battery

- Mains power: 5 V DC / 1000 mA
- Backup batteries: 2 x 1.5 V AA Alkaline

Maintenance and cleaning

- Use a soft, lint-free cloth. Avoid getting moisture in openings. Don't use household cleaners.

Frequency and coverage

- ISM frequency: 433 MHz
- ISM coverage: Up to 150 m (164 yd)
- Bluetooth 5.0, category I (+8dBm)
- Bluetooth frequency: 2400 – 2480 MHz
- Bluetooth coverage: Up to 200 m

Number of radio keys

- 64 as standard

Compatibility

- iOS15 and later | Android 8.0 and later
- iPhone 6S and later | Modern Android devices

Accessories

- BE9023 Magnetic switch
- BE9026 Contact mat
- BE9253 3.5 mm external trigger cable
- BE9199 Telephone cable

Compliance

- Regulatory Compliance Mark , RCM

In the box

- BE1521-433 Bellman Bridge
- BE9105 RJ11 cable
- Power supply and power cable
- 2 x 1.5V AA alkaline backup batteries
- Screw and plug
- Alco Wipes



© 2024 and ™ Bellman & Symfon AB

Bellman and Bellman & Symfon are registered trademarks owned by Bellman & Symfon AB, all rights reserved. This leaflet is subject to change without prior notice.

BE1521_DAS001-AU

bellman.com